

Task 1 – Long Reading

As part of your studies you are going to read about a position of employment available on an Antarctic island. Read the following text and answer the 15 questions on the next page.

Is this the career change you've been looking for?

Paragraph 1

From November to February, there is no real darkness here, just twilight. At 9:30 pm, the sun still shines brightly in the sky. Welcome to the Austral summer in the largest desert in the world. And no, I'm not talking about the Sahara here. It's a little colder in these parts. 'Here' is Antarctica, where the average temperature in summer by the coast is a boiling zero degrees. Interested? Well, the good news is that the UKAHT (United Kingdom Antarctic Heritage Trust) has a position open for a postman or woman.

Paragraph 2

Not just anyone can apply for this role. You have to have the right skillset. Your duties will involve more than just delivering the 70,000-odd items of mail; you'll also have to run the shop, perform maintenance and curate the museum. The preferred candidate will have good physical and mental fitness, be able to use spreadsheets and work with computer formulae and be capable of carrying heavy loads. You also need to be very self-motivated and enjoy working a one. You see, you'll be one of a staff of just three people, so opportunities to interact with work colleagues will be limited.

Paragraph 3

While there are few other employees around, on the other hand, there are plenty of Gentoos penguins to keep you company – about two thousand in fact. And you'll really come to appreciate them because, unlike dogs, they don't chase after and bite you when you're trying to deliver the post. Although they do smell a bit... Other occasional visitors may include leopard seals (oh, and they do bite), fur seals, elephant seals – in fact, lots of different types of seals – and you may be lucky enough to see an orca or minke whale swimming off the coast, too. And what about those pesky polar bears? Don't worry; that's the Arctic you're thinking of. You won't find any of them here.

Paragraph 4

And, actually, if you do get lonely for some more human company, you may find the thousands of cruise ship passengers who visit Antarctica each year a welcome distraction. However, they might not be quite so happy to see you. There's no mains power, heat or water, so bring a strong perfume or you might end up smelling like your birdy neighbours! A so, don't expect to be able to watch the latest series of *Sherlock*. There's no TV either, I'm afraid, and your only source of communication with the rest of the world is a VHF radio.

Paragraph 5

The job of postmaster for the summer season on the tiny Antarctic island of Goudier at the Port Lockroy base is currently vacant. UKAHT promises to pay for all your travel expenses in getting there. You'll fly to South America and then travel by ship to the island port. Food and accommodation will also be provided free of charge. In addition to this, you'll receive a salary of £1,100 per month. And, actually, this position is likely to look very good on your CV. The job is offered for a fixed contract five-month period only.

Questions 1-5 (one mark per question)

The text on the previous page has five paragraphs (1-5). Choose the best title for each paragraph from A-F below and write the letter (A-F) on the lines below. There is one title you don't need.

1. Paragraph 1
2. Paragraph 2
3. Paragraph 3
4. Paragraph 4
5. Paragraph 5

- A Qualities looked for in persons applying for the role
- B Facilities available at the UKAHT island base
- C Information on the land animals of Antarctica
- D The wildlife of Antarctica
- E The geography and weather of coastal Antarctica
- F Details on pay and term of employment

Questions 6-10 (one mark per question)

Choose the five statements from A-H below that are TRUE according to the information given in the text on the previous page. Write the letters of the TRUE statements on the lines below (in any order).

6.
7.
8.
9.
10.

- A The postmaster job is a permanent position at the Antarctic base.
- B The writer suggests the Sahara and Antarctic deserts are very similar.
- C The new postmaster must be familiar with certain types of technology.
- D The postmaster is unlikely to be able to interact with anyone except the other two staff at the base.
- E While the base may get visits from seals, it won't be visited by any polar bears.
- F While on the island, the number of ways of contacting people elsewhere is very limited.
- G In the month of January, it is unlikely to be dark at the base for very long.
- H As part of the employment contract, the new postmaster will not have to pay for their journey to Goudier.

Questions 11-15 (one mark per question)

Complete sentences 11-15 with a word, phrase or number from the text (maximum three words). Write the word, phrase or number on the lines below.

11. During the from November to January, daytime is very long in Antarctica.
12. Candidates for the role must be able to lift
13. Approximately 2,000 live on Goudier Island.
14. A great many visitors travel to the island by each year.
15. The postmaster will not be expected to pay for their while living on the island.

Task 2 – Multi-text Reading

As part of your studies you are going to read about crime in urban and rural areas. In this section there are four short texts for you to read and some questions for you to answer.

Questions 16-20 (one mark per question)

Read questions 16-20 first and then read texts A, B, C and D below the questions. As you read each text, decide which text each question refers to. **Choose the letter – A, B, C or D – and write it on the lines below.** You can use any letter more than once.

Which text

16. most likely comes from a crime prevention poster?
17. points out how rewarding a particular profession can be at times?
18. suggests that the majority of break-ins could be prevented?
19. offers practical advice if your home is going to be unlivable for a period of time?
20. compares different types of crime?

Text A

We interviewed police officer, Bob Parsons, from the local Police Force.

So, officer Parsons, tell us a few things about crime in our area.

Everybody round here has a burglary tale to tell. I've caught a few burglars in my time as a cop. Very few arrests were more satisfying for a uniformed officer than that rare capture of a burglar in the act. Most of the ones I caught had run away from the scene and were found hiding under cars, in gardens, and on one unforgettable occasion we arrested a man who became known as 'the man from Atlantis', because he hid from us for over an hour in a fishpond. It was January and he nearly froze to death. By day, they walk around the streets targeting houses that are not protected. These inexperienced thieves will attack a property in an instant. They climb through an open window or force the door, steal anything they can and then run away with their finds. Others are a bit more strategic and will plan their attack days, or even weeks, ahead.

Text B

A burglary at home is a distressing experience that can have a huge impact on your whole family. Despite this, many homes are insecure with doors and windows left open or unlocked, which provide easy access to a thief. Removing this kind of temptation would prevent an estimated 90% of burglaries. It therefore makes a lot of sense to have a home security system installed. Consider a system that sets off an alarm and also notifies the authorities of an invasion. You could also consider installing surveillance cameras which will act as a deterrent to burglars and give you peace of mind, especially when you are out or on holiday. It can also be used as evidence if you are unfortunate enough to become a victim of burglary. If you don't want or can't afford the expense of a surveillance camera system, you can have 'dummy' cameras put up that look just like the real thing. Of course, the downside to these is that if a burglary does occur, you will not be able to provide evidence.

Text C

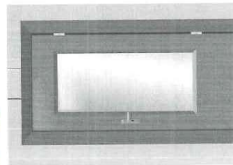
Brian: It's by far safer to live in the country than in a town or city. I don't think anyone would argue with that. **John:** I hear what you are saying, but statistically there is very little difference between the amount of crime committed in urban areas and rural areas. The thing is that the types of crime differ. For example, burglaries in remote communities are rife and farms are particularly vulnerable.

Brian: Really? I would never have thought that was the case as it seems so peaceful in the countryside and people are generally much friendlier from my experience.

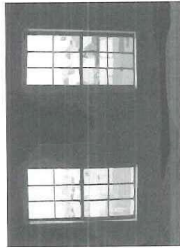
John: Well, the thing is the vast majority of rural crime is not committed by people who live locally. It is often organised gangs who target more remote buildings and houses. Sometimes they operate hundreds of miles from wherever they are based. Urban crime tends to be far more opportunistic or spontaneous.

Brian: I can see that makes sense. By the way, I have heard that agricultural equipment and fuel is a top target for gangs and easy to sell on of course because both of these are worth a lot of money.

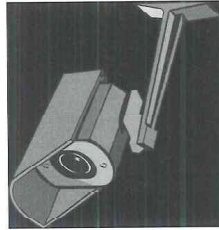
Text D



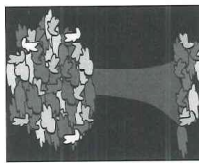
Get a better door and strengthen it with good quality locks.



Have windows replaced with toughened glass and window locks.



Install cameras and security lights to deter burglars.



Keep bushes and trees neat and tidy so that intruders can't hide behind them easily.



Keep cash and valuables out of sight of windows.

Questions 21-25 (one mark per question)

Choose the five statements from A-H below that are TRUE according to the information given in the texts alone. Write the letters of the TRUE statements on the lines below (in any order).

- | | |
|----------|--|
| 21. | A Most rural crime involves gangs targeting estates. |
| 22. | B An unkept garden can aid a potential burglar. |
| 23. | C A property may be chosen as a target a long time before the crime is actually committed. |
| 24. | D You can take precautions that will help to ensure that a burglar is caught. |
| 25. | E Surveillance equipment can be very valuable. |
| | F You can never make a door completely burglar-proof. |
| | G The police arrest very few burglars. |
| | H You don't have to go to great expense to protect your home. |

Questions 26-30 (one mark per question)

The summary notes below contain information from the texts on the previous pages. Find a word or phrase from texts A-D to complete the missing information in gaps 26-30. Write your answers on the lines below.

Summary notes

Social problems in both urban and rural areas

Protecting yourself from thieves:

- carefully thought out burglaries and thieves who are (26.)
- or spontaneous.
- be more security aware.

Crime prevention equipment:

- (27.) glass in windows and doors will help to prevent burglars from smashing their way in.
- Some home alarms will alert the (28.) so that the police reaction can be faster.
- Good external lighting is helpful.
- Install a (29.) security system if you can't afford the real thing.

Comparison of urban and rural theft:

- Both are a serious problem.
- Farms are particularly vulnerable to the theft of (30.) and agricultural equipment.

Test 5

Task 3 – Reading into writing

Use the information from the four texts you read in Task 2 to write a short article (150-180 words) for a public information leaflet on how to protect your home and possessions.

You should plan your article before you start writing. Think about what you want to say and make some notes to help you in this box:

Planning notes

(No marks are given for these planning notes)

Now write your article in about 150-180 words. Try to use your own words as far as possible – don't just copy sentences from the reading texts.

.....

.....

.....

.....

.....

.....

.....

.....

.....

.....

When you have finished your article, spend 2-3 minutes reading through what you have written. Make sure you have answered the task completely. Remember to check how you made use of the reading texts, as well as the language and organisation of your writing.

Task 4 – Extended writing

Your pen friend has asked you to tell him/her about your favourite sport or game. Write a letter to your pen friend (150-180 words). Say what sports and games are popular in your country, then describe your favourite sport or game, saying how often you play it and why you like it. You should plan your letter before you start writing. Think about what you want to say and make some notes to help you in this box:

Planning notes

(No marks are given for these planning notes)

Now write your letter in about 150-180 words.

.....

.....

.....

.....

.....

.....

.....

.....

.....

.....

When you have finished your letter, spend 2-3 minutes reading through what you have written. Make sure you have answered the task completely and remember to check the language and organisation of your writing.